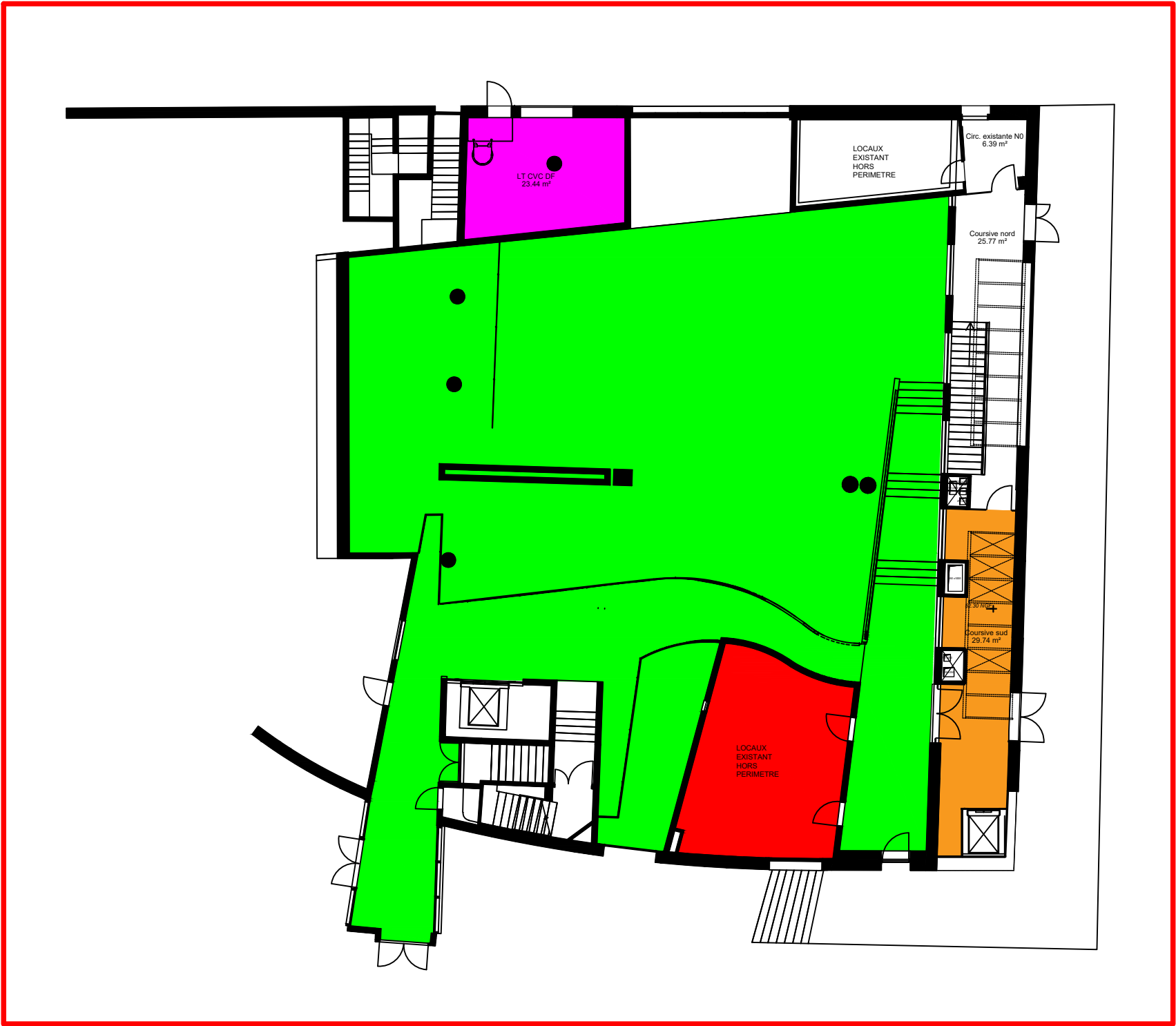





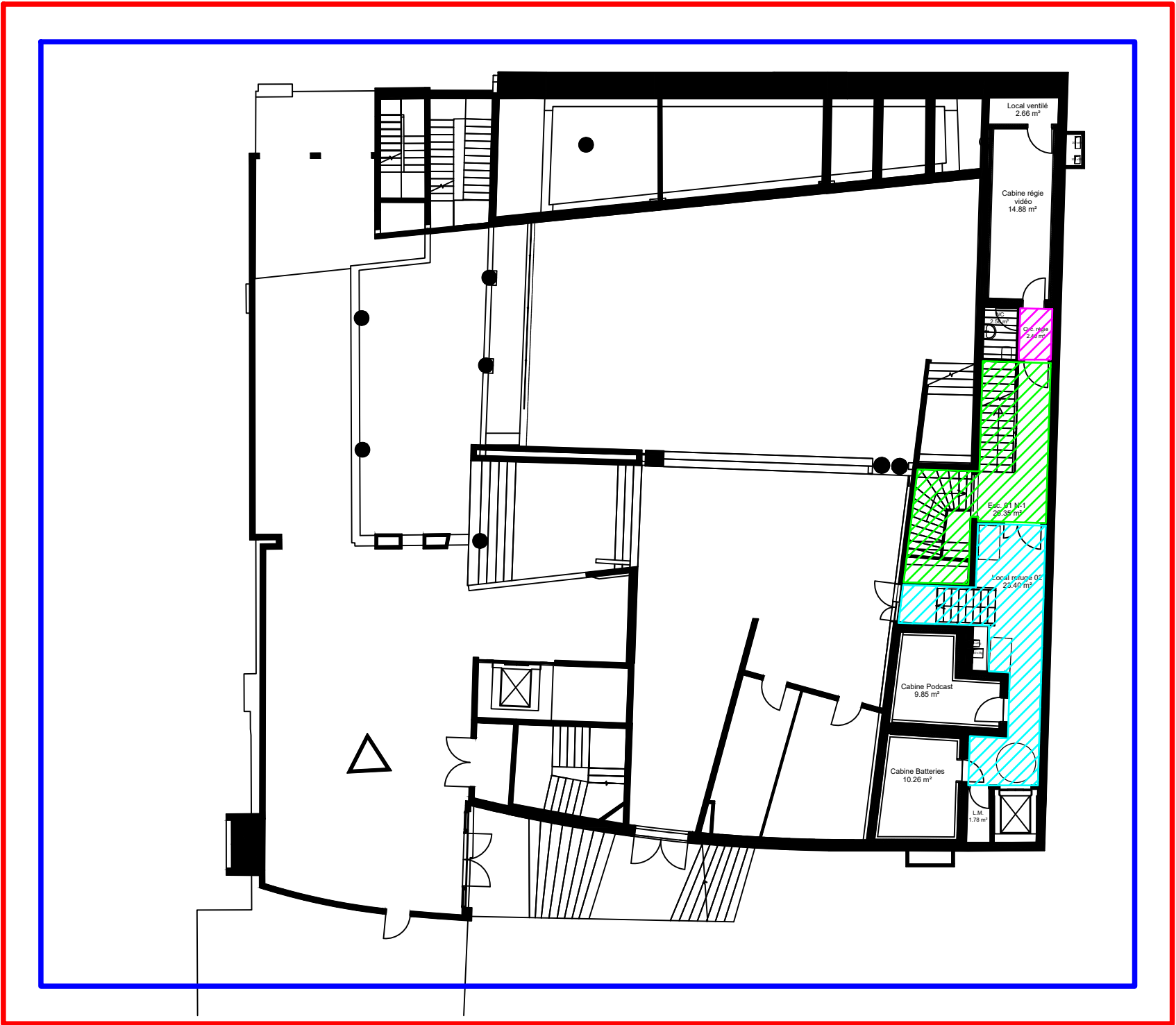


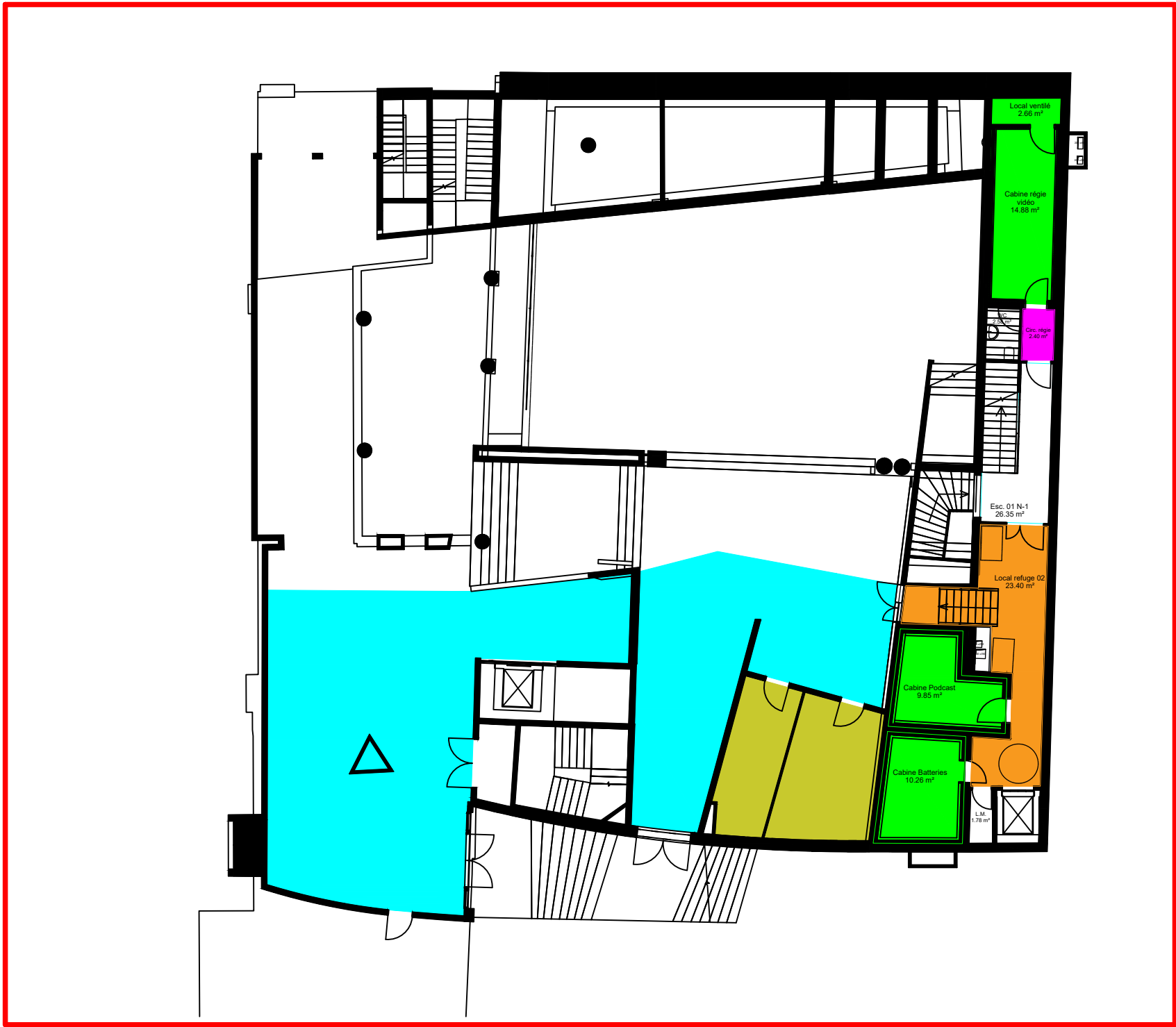
	ZA1 : ENSEMBLE DE L'ETABLISSEMENT
	ZC2 : ENSEMBLE DE L'ETABLISSEMENT
	ESCALIER S3D 01 MIS EN SUPPRESSION
	ZF 48 : COURSIVE SUD S3D



	ZDM RDC : S3D
	ZDA LOCAL TECHNIQUE S3D
	ZDA COURSIVE SUD S3D
	ZDA 53 PCS (existant)
	ZDA 57 (existant)



	ZA1 : ENSEMBLE DE L'ETABLISSEMENT
	ZC2 : ENSEMBLE DE L'ETABLISSEMENT
	ESCALIER S3D 01 MIS EN SURPRESSION
	ZF 46 : REGIE VIDEO S3D
	ZF 47 : LOCAL REFUGE S3D



	ZDM MEZZANINE : S3D
	ZDA REGIE VIDEO S3D
	ZDA LOCAL DIVERS S3D
	ZDA LOCAL REFUGE S3D
	ZDA 92 (existant)
	ZDA 75 (existant)

